

## Covid19Tourism.com Site Manual

By Yang Yang and Veronica Rohach

*The U.S.-Asia Center for Tourism and Hospitality Research, Temple University*

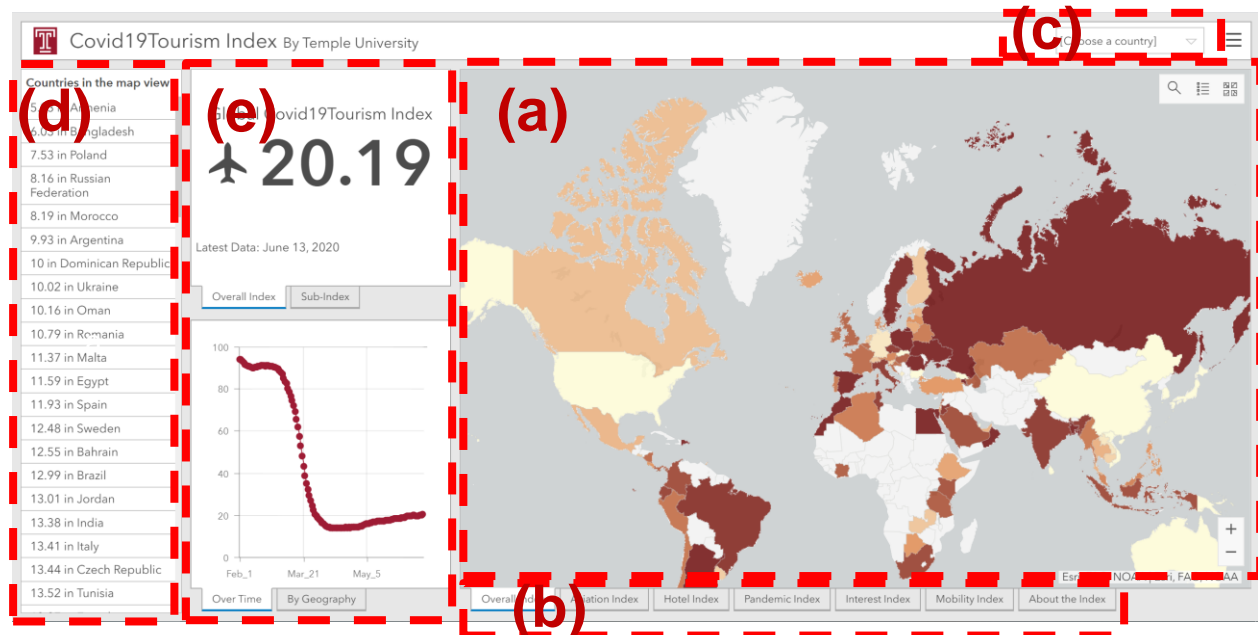
### 1. Covid19Tourism Index

Covid19Tourism index helps the industry gauge the recovery level compared to the “normal time” without Covid-19. A level of 100 indicates the recovery to the normal level. Five sub-indexes include Covid19Tourism Aviation Index, Covid19Tourism Hotel Index, Covid19Tourism Pandemic Index, Covid19Tourism Interest Index, and Covid19Tourism Mobility Index. The first three are included to calculate the overall index. All the data were 7-day moving-average smoothed. All index and sub-indexes have a maximum of 100, and a lower value of index indicates a severe situation associated with Covid-19 compared to the “normal time”.

### 2. Overview of dashboard

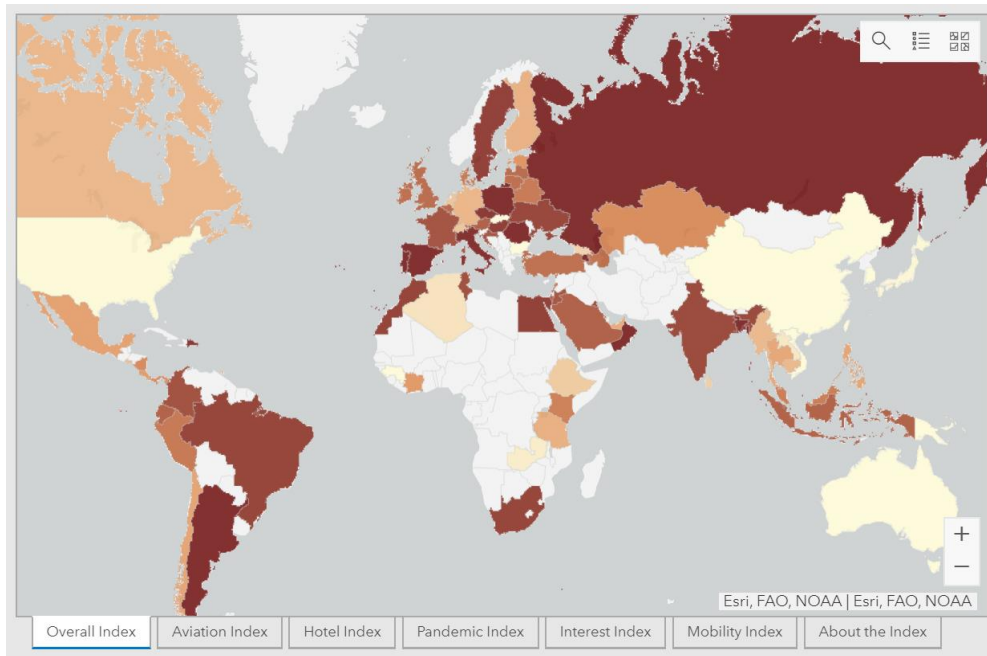
The dashboard provides map view, country list, overall statistics, and graphs for analysis. It has the following part:

- (a). Map view
- (b). Map view navigation tabs
- (c). Country locator
- (d). Country list
- (e). Statistics and graphs

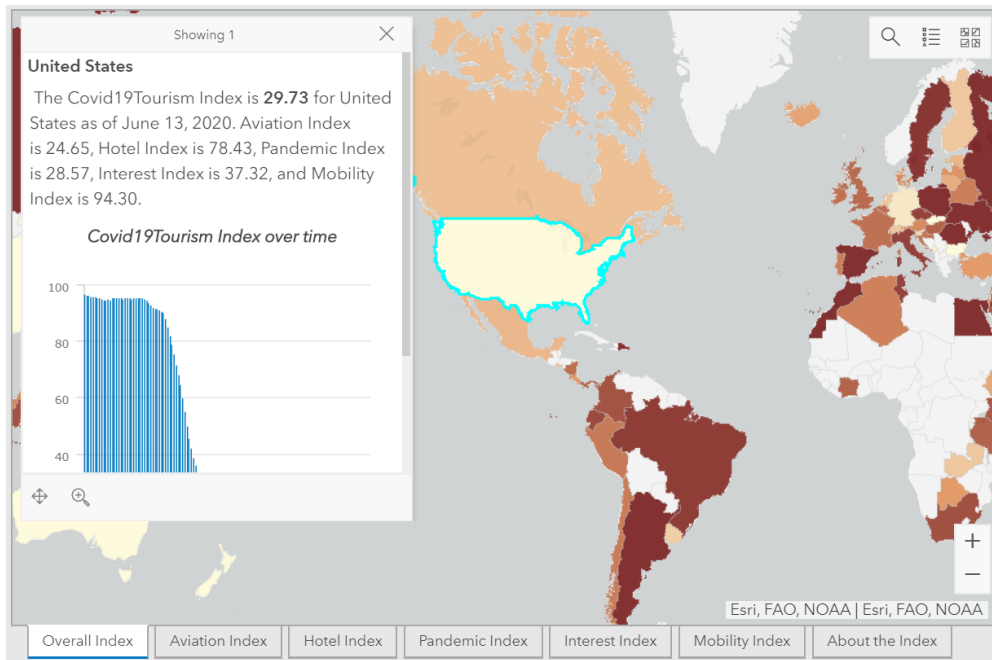


### 3. Map view

On the right side of the screen you will see a global map of **Overall Index** by default.



When a country is selected, a box appears on top of the map in the upper left corner. This box shows the latest Covid19Tourism index (or sub-index) as well as a time-series graph to demonstrate how the index changes over time. You can scroll down to view the entire time-series graph using the rectangle on the right of the box. Press the **X** in the upper right corner of the box to minimize it.

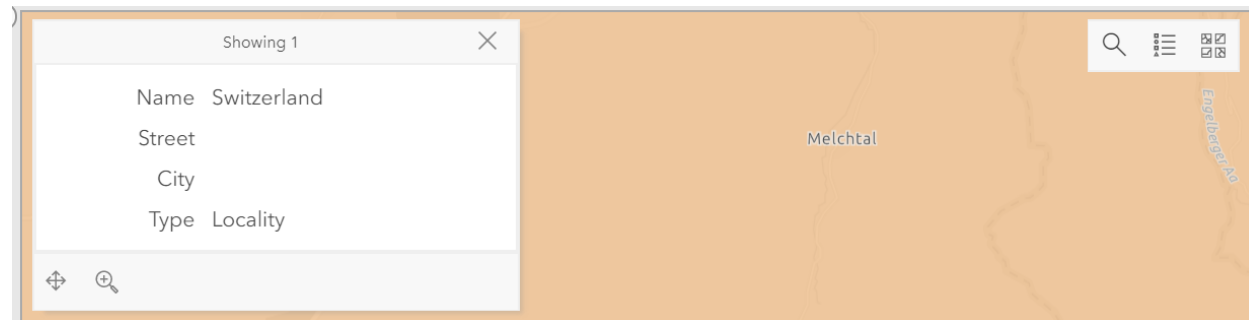




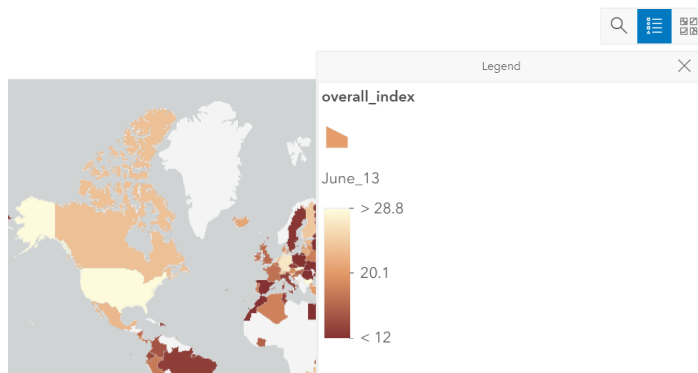
Directly above the **About the Index** tab you will see + and - symbols . Click the + symbol to zoom into the map and the - symbol to zoom out. You may also use your mouse to drag the map to other locations.

At the top right of the map you will see 3 or 4 more icons depending on which tab you have selected.

The *magnifying glass* can be used to search for specific countries or towns by clicking on it and typing in the box. Press the ENTER key on your keyboard when you have finished typing. This function zooms the map into the region but *does not* automatically provide you with the same details that pop up when you click the country directly on the map.

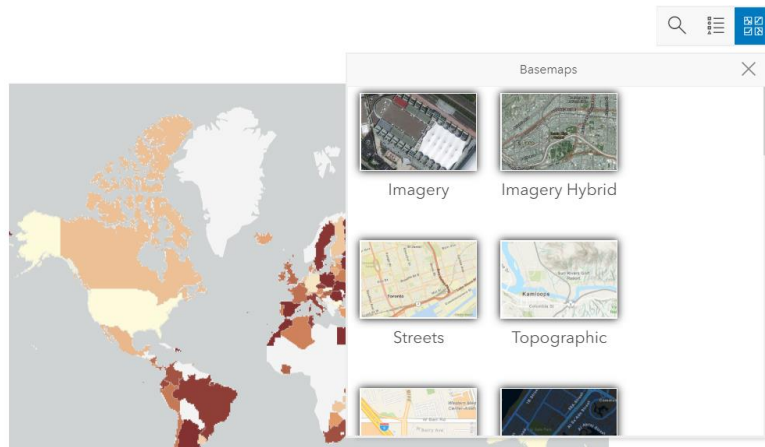


To the right of the *magnifying glass* icon you will see an icon with four lines . Selecting this icon brings up the legend for the selected map. All tabs on the map show darker colors as the lowest index values, indicating a more critical situation created by COVID-19. The lighter colors signify a higher index value, meaning a less critical situation.



On the **Aviation Index**, **Hotel Index**, **Pandemic Index**, **Interest Index**, and **Mobility Index** tabs, the third icon shows the different layers available for the map. You can ignore this icon, as there is only one layer available for each of the aforementioned tabs.

On all of the map tabs you will see an icon with *four boxes* which allows you to change the map to a variety of other basemaps. Use the grey rectangle to the right of the box to see additional options.



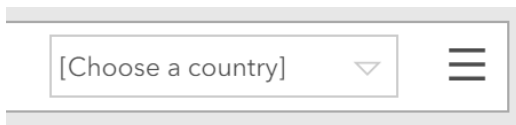
#### 4. Map view navigation tabs

At the bottom of the map view, you see that **Overall Index** tab is selected by default. You may click the **Aviation Index**, **Hotel Index**, **Pandemic Index**, **Interest Index**, and **Mobility Index** tabs to view information on their corresponding topics. The last tab on the far right, **About the Index**, provides more detail about the index and how to use the figures provided.



#### 5. Country locator

Above the map on the right hand side, you will see a dropdown menu prompting you to **Choose a Country**. For this function to work you must have the **Overall Index** tab selected at the bottom of the map. Clicking on the dropdown menu and selecting a country will zoom in the map to that country and a box will appear to present the information on the latest overall index and historical graph.



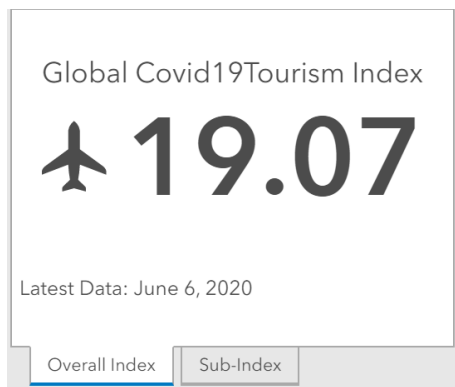
#### 6. Country list

The panel on the left titled **Countries in the Map View** provides a list of countries in descending order of industry recovery score. Click any country on this list to zoom in, and click again to return to the global view. The country list (**Countries in the Map View**) is refreshed based on the countries presented in the current view of **Overall Index** on the map.

Countries in the map view
5 in Armenia
6.37 in Poland
6.9 in Russian Federation
7.31 in Romania
8.95 in Oman
9.16 in Portugal
9.56 in Bangladesh
9.75 in Spain
10 in Argentina
10.27 in Italy
10.9 in Dominican Republic
10.97 in Czech Republic
11.26 in Malta
11.45 in Hungary
11.57 in Sweden
11.61 in Egypt
11.81 in Morocco
11.88 in South Africa
11.91 in Brazil
12.04 in Bahrain

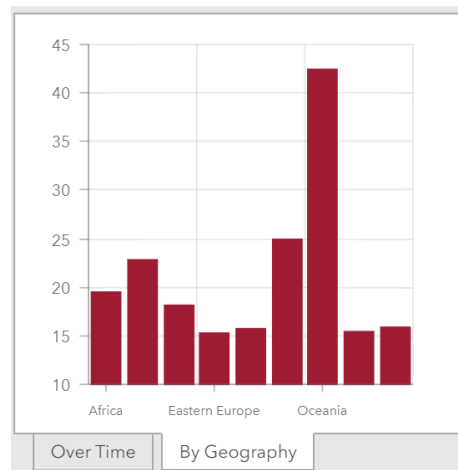
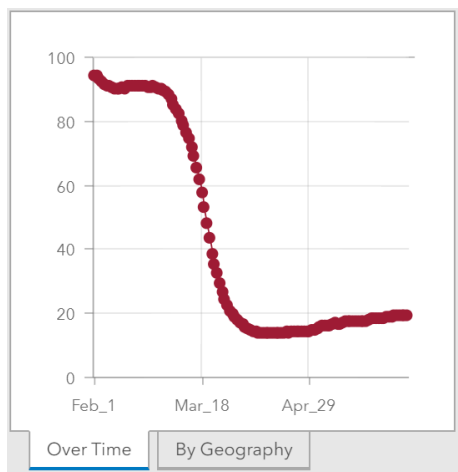
## 7. Statistics and graphs

To the right of the country list, you will see the average index score of countries for the **Overall Index** as well as **Sub-Index** by clicking their respective tabs.



Below the **Overall Index** and **Sub-Index**, you will also see how the index changes over time (beginning February 1st, 2020) by selecting the **Over Time** tab. By clicking the **By Geography** tab directly to the right

of the **Over Time** tab, you can see how the average index differs in different geographic regions.



### Contact

For further inquiries, please contact Dr. Yang Yang: yangy at temple.edu