

PROPOSED MEADOW SEED MIX SHALL BE "Rain Garden Mix" ERNMX-180 (OR APPROVED EQUAL), CONTAINING THE FOLLOWING:

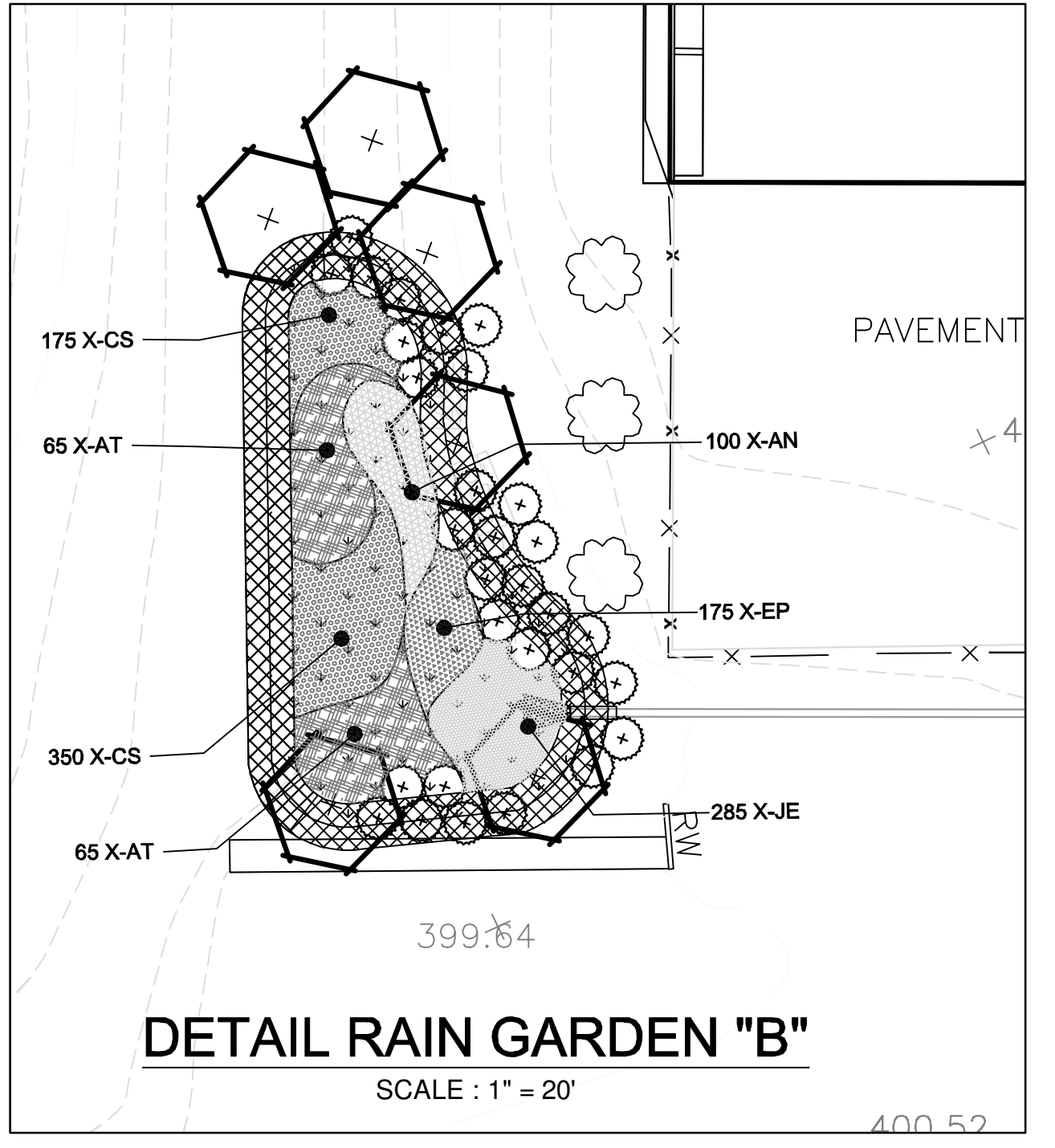
13% Carex vulpinoidea	Fox Sedge
12% Elymus virginicus	Virginia Wild Rye
11% Poa palustris	Fowl Bluegrass
9% Verbena hastata	Blue Vervain
6% Juncus effusus	Soft Rush
5% Aster novae-angliae	New England Aster
5% Zizia aurea	Golden Alexanders
4% Rudbeckia hirta	Black Eyed Susan
4% Elymus hystrix	Bottlebrush Grass
4% Helianthus autumnale	Common Sneezeweed
4% Aster prenanthoides	Zigzag Aster
3% Aster umbellatus	Flat Topped White Aster
3% Agrostis scabra	Rough Bentgrass
3% Minulus ringens	Monkey Flower
3% Penstemon digitalis	Tall White Beard Tongue
2% Desmodium canadense	Showy Tick Trefoil
2% Monarda fistulosa	Wild Bergamot
2% Asclepias incarnata	Swamp Milkweed
2% Geum laciniatum	Rough Avens
1% Penthorum sedoides	Ditch Stonewort
1% Chelone glabra	Turtlehead
1% Ludwigia alternifolia	Seedbox

Seeding rate: 15 bulk lbs per acre or 1/3-1/2 lbs per 1,000 ft²
 Note: This area should only be mowed during the dormant season.

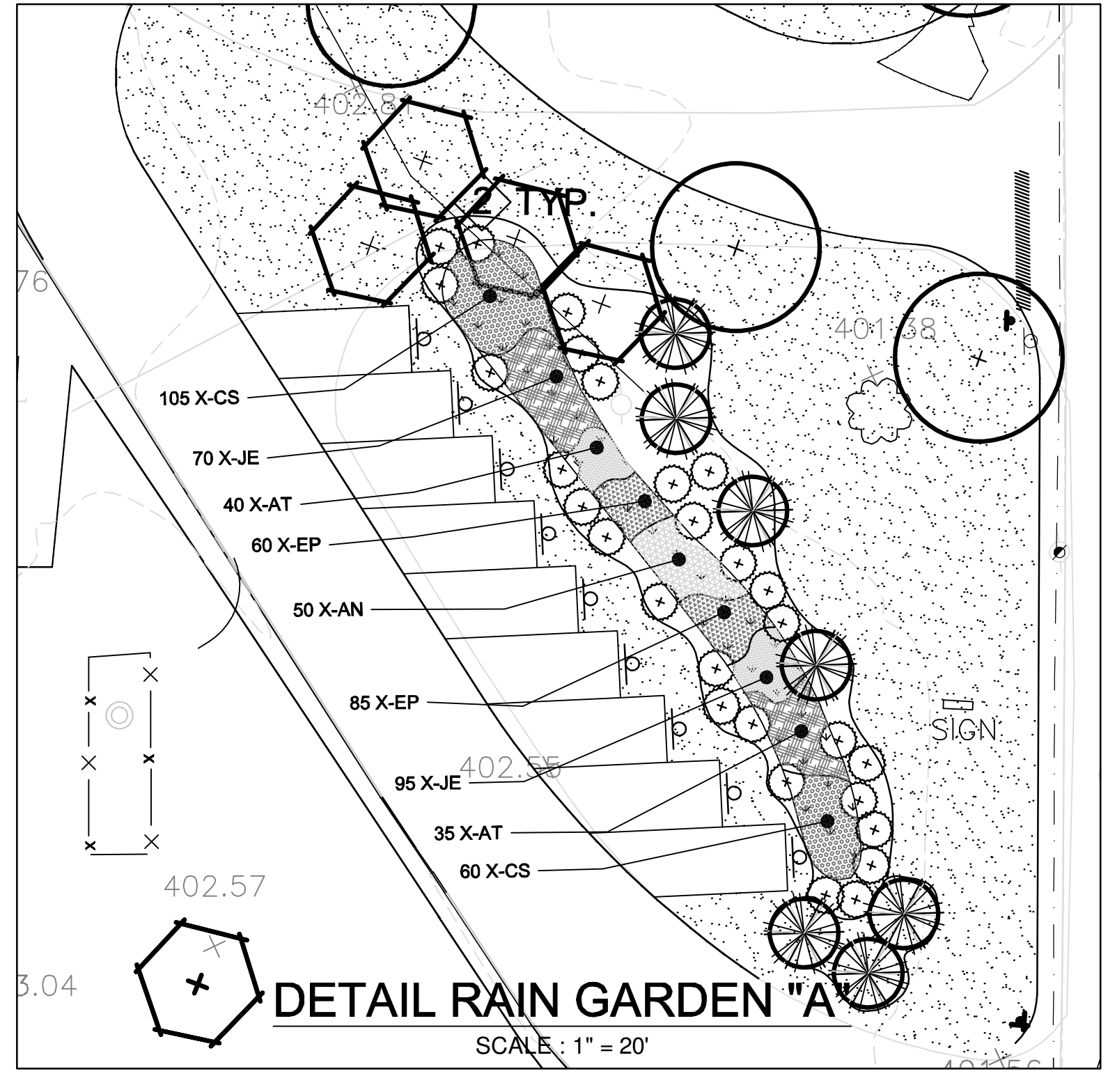
PLANT LIST (SEE GENERAL NOTE)

KEY	QUAN.	BOTANICAL NAME	COMMON NAME	SIZE	ROOT	COMMENTS
CANOPY TREES						
ARRS	7	ACER RUBRA 'RED SUNSET'	RED SUNSET MAPLE	3-3.5" CAL.	B&B	
QP	10	QUERCUS PHELLOS	WILLOW OAK	3-3.5" CAL.	B&B	
UNDERSTORY TREES						
BN	6	BETULA NIGRA	RIVER BIRCH	6-8' HT.	B&B	3 STEM MIN.
CC	9	CERCIS CANADENSIS 'FOREST PANSEY'	FOREST PANSEY REDBUD	6-8' HT.	B&B	
TD	7	TAXODIUM DISTICHUM	BALD CYPRESS	6-8' HT.	B&B	
EVERGREEN TREES						
PM	3	PSEUDOTSUGA MENZIESII	DOUGLASFIR	5-6' HT.	B&B	
PS	3	PINUS STROBUS	WHITE PINE	5-6' HT.	B&B	
SHRUBS						
CS	27	CORNUS SANGUINEA 'WINTER FLAME'	WINTER FLAME BLOODTWIG DOGWOOD	2-2.5' HT.	3 GAL.	5' O.C.
IG	19	ILEX GLABRA	INKBERRY HOLLY	18-24" HT.	3 GAL.	5' O.C.
IV	16	ILEX VERTICILLATA	WINTERBERRY	18-24" HT.	3 GAL.	5' O.C.
MP	24	MYRICA PENNSYLVANICA	NORTHERN BAYBERRY	18-24" HT.	3 GAL.	5' O.C.
VR	15	VIBURNUM X RHYTIDOPHYLLOIDES	LANTANAPHYLLUM VIBURNUM	2-2.5' HT.	3 GAL.	5' O.C.
HERBACEOUS/GROUND COVER						
X-AN	150	ASTER NOVAE-ANGLIAE	NEW ENGLAND ASTER	2" PLUG	1'-6" O.C.	
X-AT	205	ASCLEPIAS TUBEROSA	BUTTERFLY WEED	2" PLUG	2'-0" O.C.	
X-CS	690	CAREX STIPATA	AWL-FRUITED SEDGE	2" PLUG	12" O.C.	
X-EP	320	ECHINACEA PURPUREA	PURPLE CONEFLOWER	2" PLUG	12" O.C.	
X-JE	450	JUNCUS EFFUSUS	SOFT RUSH	2" PLUG	12" O.C.	

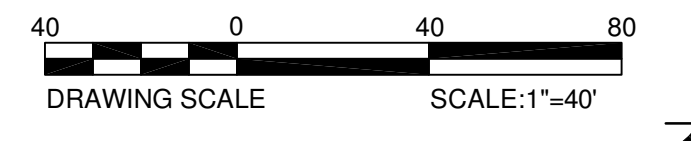
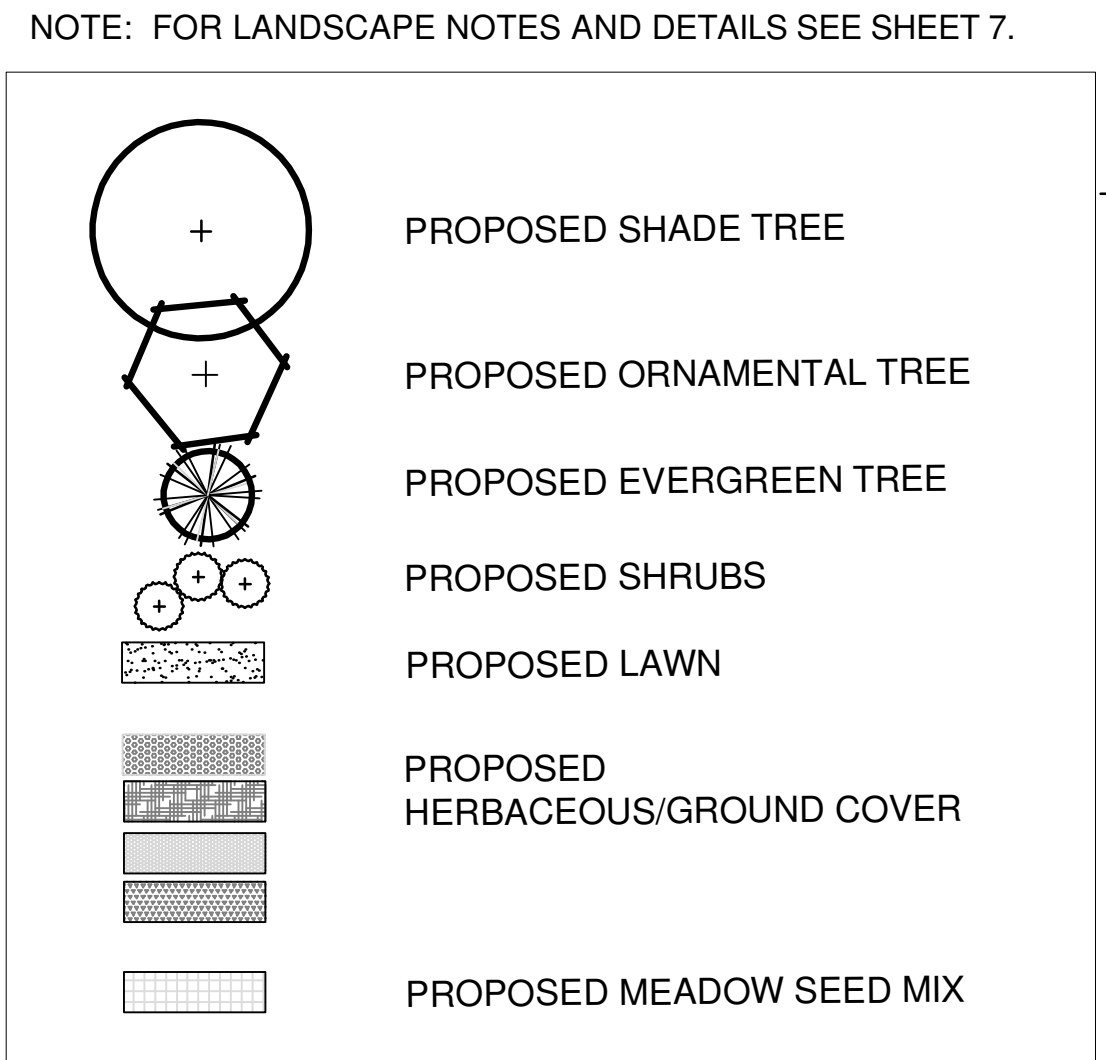
PLAN VIEW
SCALE: 1" = 40'



DETAIL RAIN GARDEN "B"
SCALE: 1" = 20'



DETAIL RAIN GARDEN "A"
SCALE: 1" = 20'



DUFFIELD ASSOCIATES
 Consultants in the Geosciences
 211 N 13TH STREET, SUITE 704
 PHILADELPHIA, PA 19107
 TEL: (215) 545-7295
 FAX: (215) 875-7356
 OFFICES IN WILMINGTON, DE
 GEORGETOWN, DE AND
 STONE HARBOR, NJ
 E-MAIL: DUFFIELD@DUFFNET.COM

CHECKED BY: DWM
 DESIGNED BY: AMD
 FILE NAME: D5740C16.DWG
 DRAWN BY: AMD
 ALBERT M. DIMBIRICH RLA ASLA
 STATE: PA

OWNER:
 AVON GROVE CHARTER SCHOOL
 110 EAST STATE ROAD
 WEST GROVE, PA 19380

LANDSCAPE DEVELOPMENT PLAN
KEMBLESVILLE ELEMENTARY SCHOOL
AVON GROVE FOUNDATION
 FRANKLIN TOWNSHIP ~ CHESTER COUNTY ~ PENNSYLVANIA

DATE: 02 MAY 08
 SCALE: AS NOTED
 PROJECT NO. 5740.CI
 SHEET: C-6