



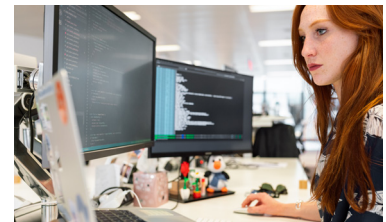
## PROJECT UPDATES

- Joe Shadwick, Pitt Public Health Communications Specialist, was hired to assist with marketing, branding, and visuals.
- The next Stakeholder Committee meeting is tentatively scheduled for September 2021. Please check your email in the coming weeks for a meeting poll.



## DISSEMINATION

- PI- Elizabeth Van Nostrand presented preliminary study findings at the Legal Epidemiology Workshop at the Sixth Global Law Enforcement and Public Health Conference on March 18, 2021.
- The Pitt Public Health research team presented at the Centers for Disease Control and Prevention virtual reverse site visit in April 2021. The presentation discussed project progress to date, with a focus on COVID-19 related challenges.
- A webinar was held on April 9, 2021 for Indiana courts interested in learning more about the project. Over 20 courts from over 15 counties have agreed to allow Pitt to access court supervised release system (SRS) data. The courts will be approached at the end of 2021 to engage in qualitative interviews.



## QUALITATIVE INTERVIEWS

- Interviews of 11 Assistant Wardens have been conducted in approximately 2/3 of Indiana's correctional facilities. Due to ongoing COVID-19 issues, the remaining Assistant Wardens will be interviewed in the Summer/Fall 2021.
- Interviews with Wexford, RepuCare, and other addiction recovery staff in Indiana correctional facilities are on-going.
- Interviews of problem solving court personnel will begin after the pandemic abates (tentatively in late 2021/early 2022).



## CODING

- Coding methodology is finalized and the legal team has begun coding correctional facility protocols and interview transcripts. The goal of coding is to identify services and interventions offered to inmates in Indiana correctional facilities that can be linked with the Management Performance Hub datasets.
- The correctional facility qualitative data analyses will focus on identifying themes related to the following three research questions: (1) What are the inclusion and exclusion criteria for inmates to participate in substance abuse treatment programming; (2) What types of staff-initiated substance abuse treatment programming exists in the Indiana Department of Correction; and (3) What are the barriers to offering substance abuse treatment programming to inmates?



## DATA LINKAGE

- The research team is in the process of requesting SRS data from Indiana Supreme Court, Office of Judicial Administration.
- The Charter with the Management Performance Hub is near completion.



## MODELING

- The modeling team will access a new version of FRED software that will provide options not previously available.
- Test data are being integrated into the model to determine model capabilities, outputs, and outstanding needs.

For more information, please contact: [psc@pitt.edu](mailto:psc@pitt.edu)