



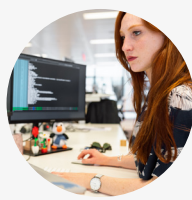
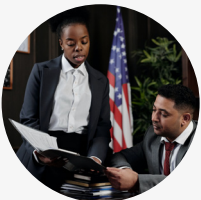
## PROJECT UPDATES

- The study’s timeframe was changed from December 5, 2016 – March 31, 2020 to January 1, 2018 – June 30, 2021.
  - o This change will make the research findings more current and may allow for a comparison of interventions before and after the public health emergency.
  - o This change also increased the number of potential problem solving courts (PSCs) for inclusion in our study from 57 to 78.
- The Indiana Office of Court Services (IOCS) will send emails to the 78 PSCs inviting them to support and participate in our study.
- In late March or early April 2021, a webinar will be conducted for those courts interested in learning more.
- Elizabeth Van Nostrand, JD, will present preliminary study findings at the Legal Epidemiology Workshop at the Sixth Global Law Enforcement and Public Health Conference on March 18, 2021.



## LEGAL TEAM

- In collaboration with the Evaluation Team, methodology to code SRS data, sentencing data, corrections and court protocols, and qualitative interviews is being finalized to link datasets.



## EVALUATION TEAM

- Interviews with the Indiana Department of Correction Deputy Wardens and Wexford/RepuCare are ongoing.
- At the request of Committee Member Ross Silverman, COVID- related questions, specifically related to telemedicine, will be included in the qualitative interviews.
- The IOCS requested that qualitative interviews be postponed until 2022.
- Coding methodology will be created to perform a separate analysis of the qualitative interviews.



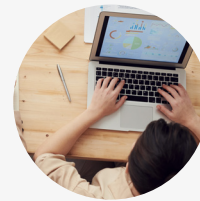
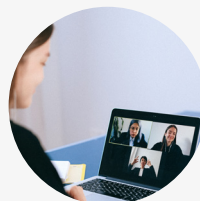
## BIostatISTICS TEAM

- Coordination continues with the Management Performance Hub to develop a charter to obtain state agency data.
- We are in the process of obtaining Indiana PDMP data for a better measurement of individuals on buprenorphine.
- The 2015-2019 overdose mortality data are available and maps will be updated.



## MODELING TEAM

- Engagement continues with all Research Team members to ensure data are requested and collected in a manner that will allow for modeling.



**For more information, please contact: [psc@pitt.edu](mailto:psc@pitt.edu)**