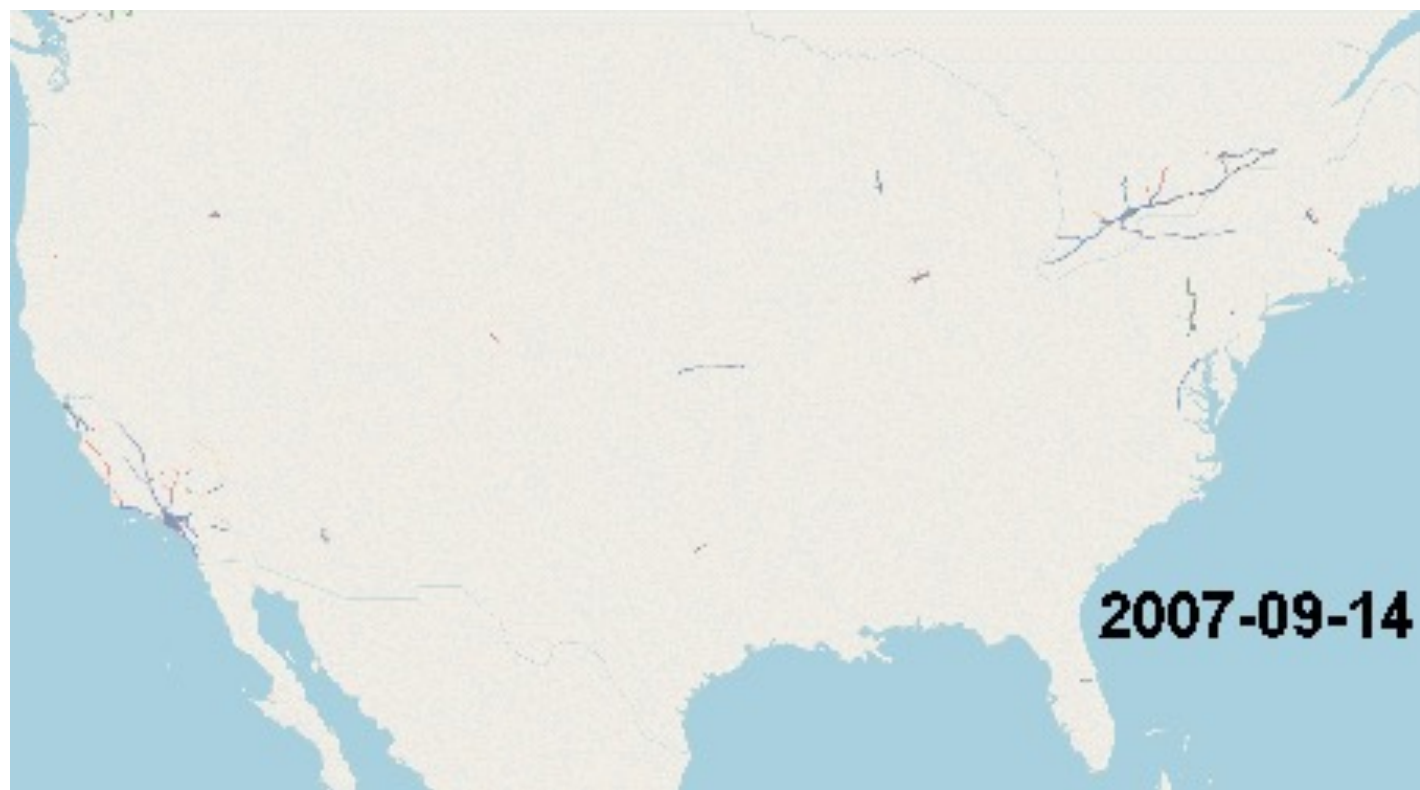


Mapping Futures:

**Empowering Students
and Communities
through OpenStreetMap
and GIS**



OpenStreetMap
The Free Wiki World Map



Introduction to OpenStreetMap

- "Have you heard of OpenStreetMap (OSM)?"
- Comparison with Google Maps
- Introduction to a user-created worldwide detailed database



Search bar with magnifying glass icon and menu icon.

- Российская Федерация
- 1 Париж, Франция
- 77, Германия
- 00 Астана, Казахстан
- 510 Шахты, Российская
- 510 Шахты, Российская
- 17060 Краснокамское, Российская
- 7750 Ишим, Российская
- 1500 Степногорск,
- 262 Углеуральский, ция



OSM Overview

- "Free and open web map of the world"
- Empowering users to add and use data freely
- Described as the "Wikipedia of maps"

OSM Community Engagement

- "Managed by volunteers worldwide"
- "Internet connection and email address - all you need to contribute"
- Emphasis on user-driven data collection



Why Choose OSM Over Google Maps

- "Avoid giving data for free to corporations"
- Open-content license vs. Google's data monetization
- OSM's free usage for any purpose





OSM Use Cases

Run Share Export Wizard Save Load Settings Help overpass turbo Map Data

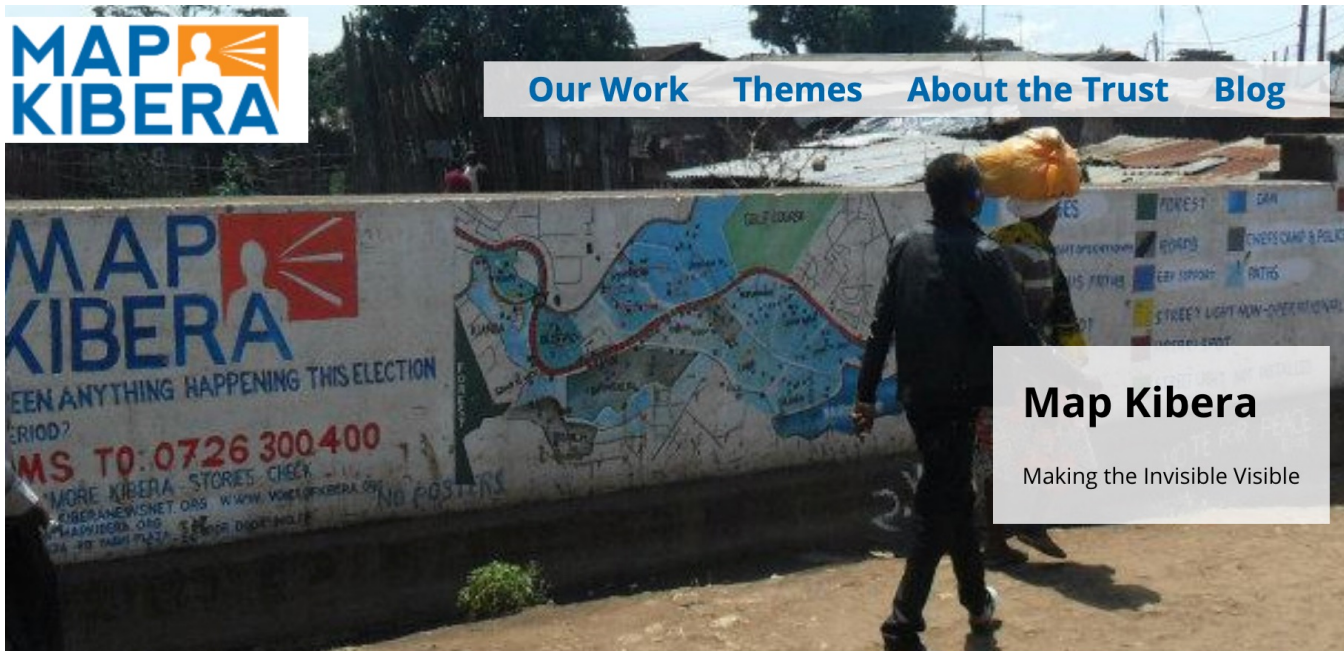
```
1 // @name Drinking Water
2
3 /*
4 This is an example Overpass query.
5 Try it out by pressing the Run button above!
6 You can find more examples with the Load tool.
7 */
8 node
9   [amenity=bicycle_parking]
10  {{{bbox}}};
11 out;
```

Run Share Export Wizard Save Load Settings Help overpass turbo Map Data

execute this query on Overpass API (Ctrl+Enter)

```
1 // @name Drinking Water
2
3 /*
4 This is an example Overpass query.
5 Try it out by pressing the Run button above!
6 You can find more examples with the Load tool.
7 */
8 node
9   [internet_access=wlan]
10  {{{bbox}}};
11 out;
```

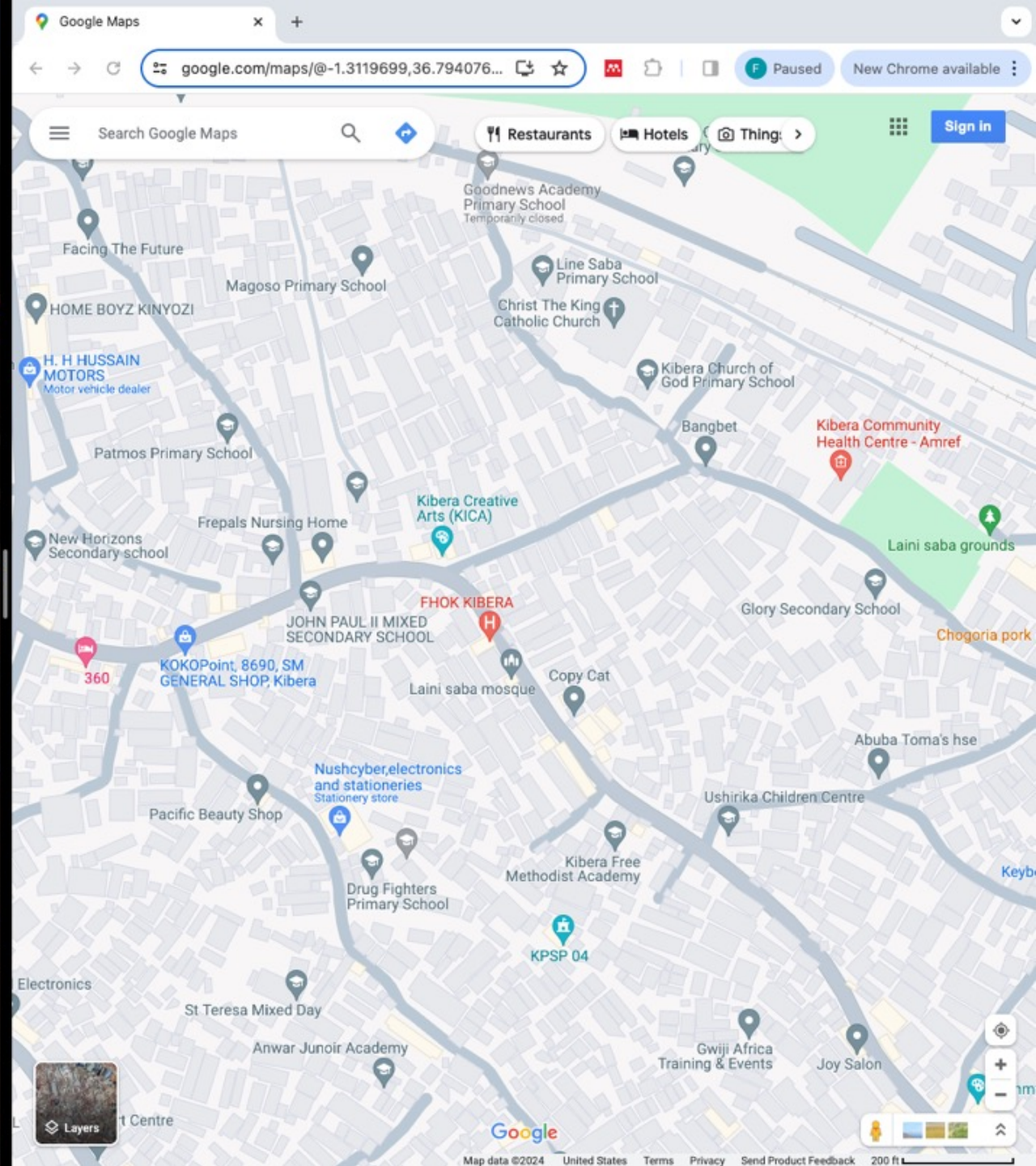
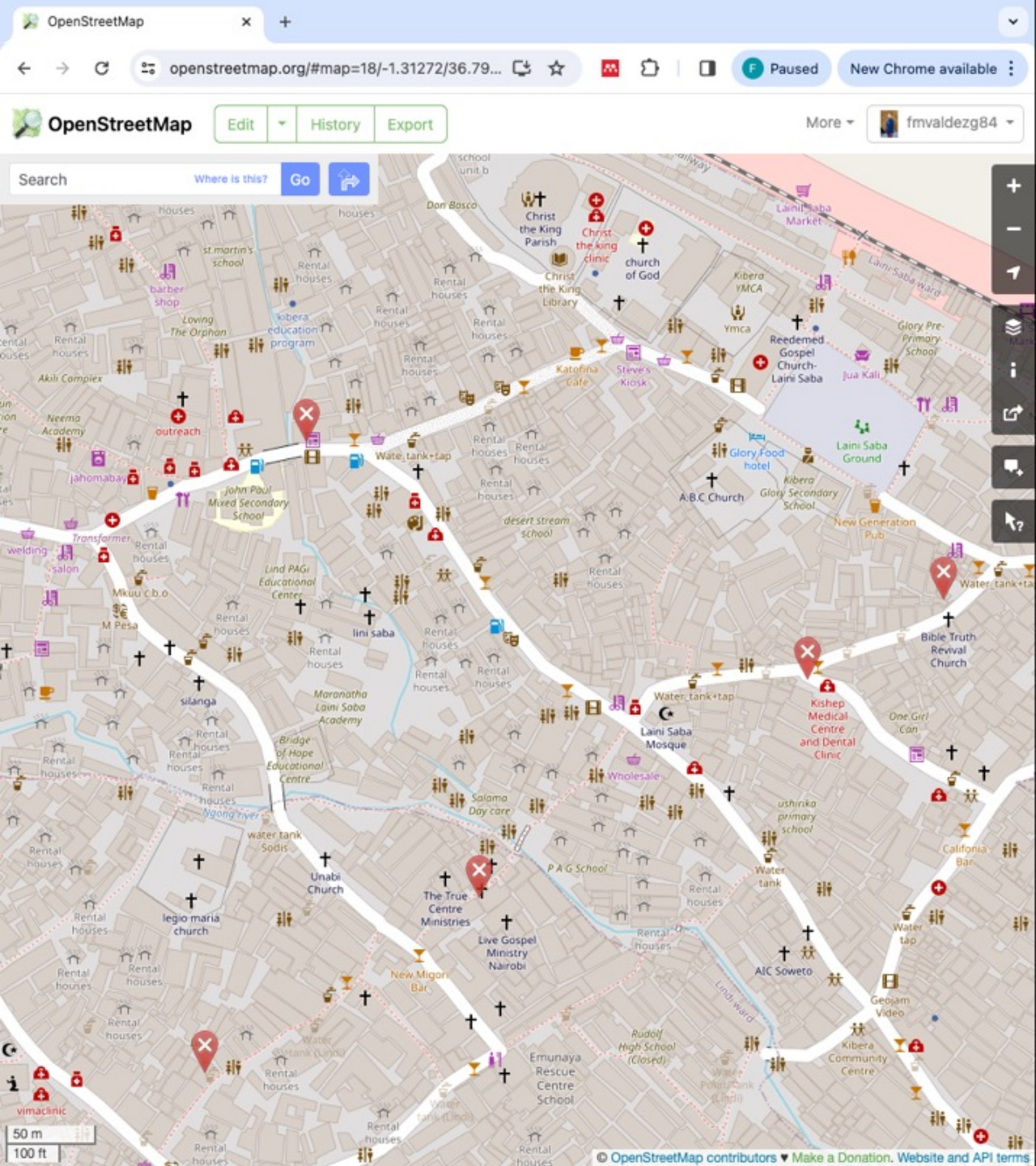
Overpass Turbo



User-Driven Detailed Information

- "Users decide what information is important to add/update"
- Contrasting Google Maps and OSM in specific regions
- Example of detailed mapping in Kibera, Nairobi

Kibera in Nairobi, Kenya, was a blank spot on the map until November 2009, when young Kiberans created the first free and open digital map of their own community. Map Kibera has now grown into a complete interactive community information project. We work in **Kibera**, **Mathare** and **Mukuru**, use all these **tools**. **Get in touch!**



Major OSM Communities and Projects



The background features a complex network of thin, light-colored lines connecting various sized circles in shades of purple and blue. The circles vary in size and opacity, creating a sense of depth and connectivity. The overall aesthetic is modern and digital.

Benefits of OSM in Education

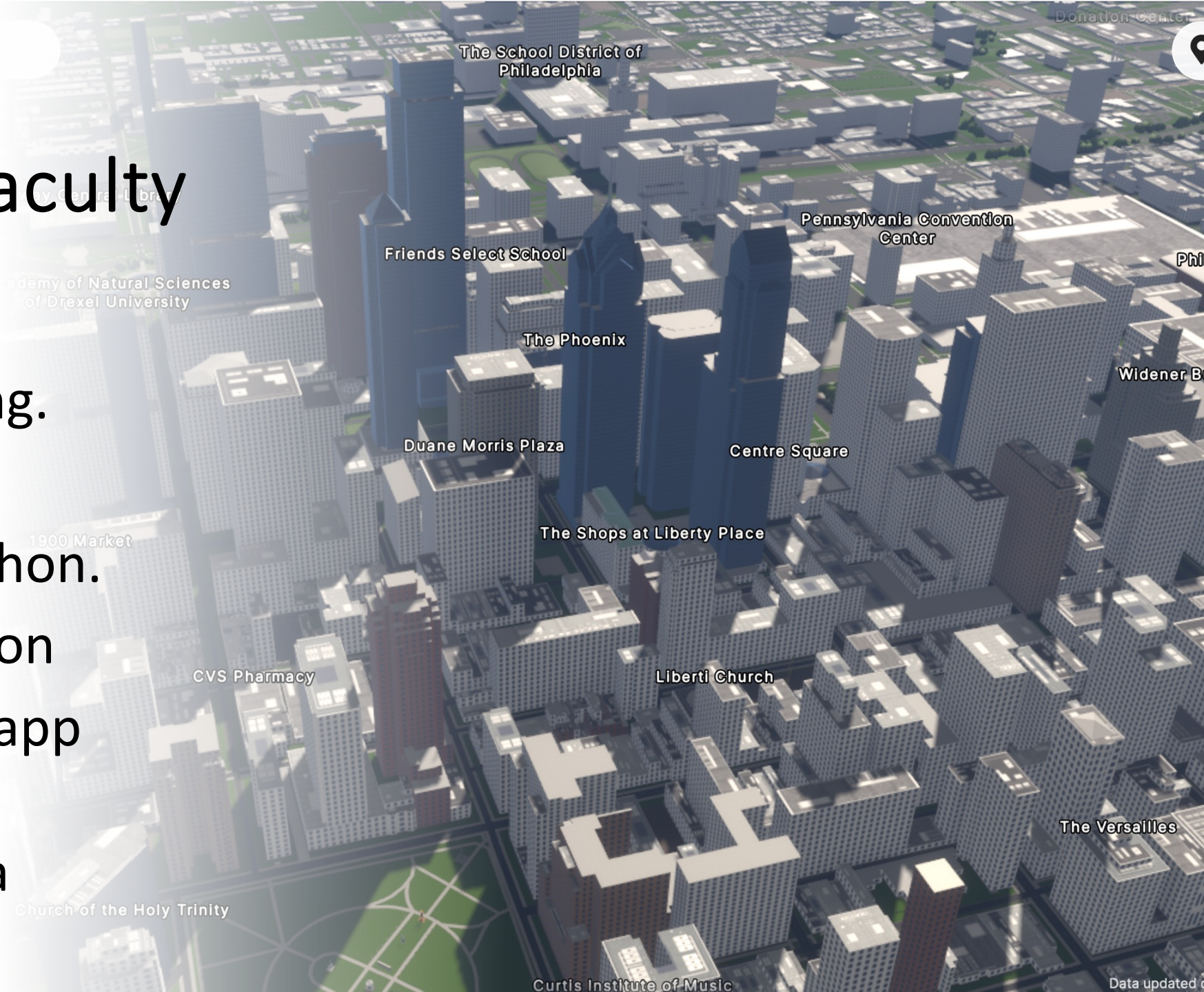
Benefits of OSM in Education

- Hands-On Learning Experience
- Community Engagement
- Cross-Disciplinary Applications
- Digital Literacy Enhancement
- Global Perspective
- Problem-Solving Skills
- Networking and Collaboration
- Open Data Advocacy



Activities for students & faculty

- Volunteer mapping.
- Join a mapathon.
- Organize a mapathon.
- Field data collection
- Use the data (for app developing)
- Analyze OSM data





Thank You

GIS and Mapping at Temple Libraries



Need help with GIS, spatial data, or mapping?

Ask Temple Libraries' GIS Specialist:



Felipe Valdez



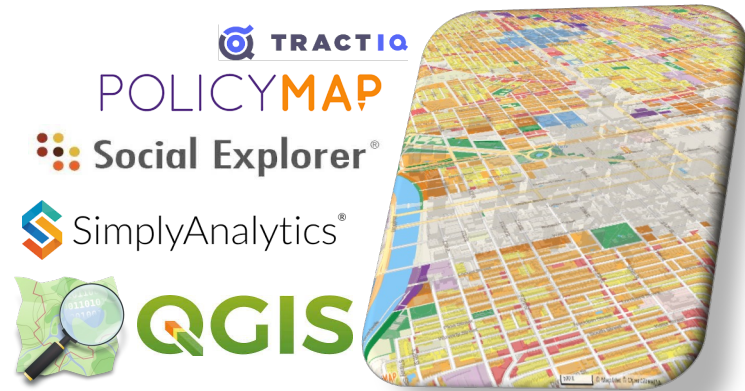
Book an appointment

guides.temple.edu/felipe



Email asktulibrary@temple.edu

- Finding geospatial data
- Using GIS and web mapping platforms, or choosing the right platform
- Library map collections & mapping subscriptions
- Analyzing and visualizing geospatial data
- Telling stories with maps
- Managing, and sharing geospatial data
- Instruction for students or research groups
- Teaching with GIS, maps, and spatial data
- Field data collection
- Details at library.temple.edu/gis



- 📍 **Creating Interactive Maps: in CollectionBuilder**
Wednesday, January 31, 10am
- 📍 **Terrain 3D Printing with QGIS**
Friday, February 16, 10am
- 📍 **Field Data Collection Tools**
Thursday, February 29, 10am
- 📍 **Mapping the U.S. with Social Explorer**
Tuesday, March 5, 11am
- 📍 **Mapping Data with Policy Map**
Wednesday, March 13, 2pm
- 📍 **Mapping Business Data with Simply Analytics**
Tuesday, March 19, 2pm
- 📍 **Maps and Laser Cutting with OpenStreetMap**
Thursday, April 18, 10am

Learn more and register at library.temple.edu/events

Mapping Workshops Spring 2024