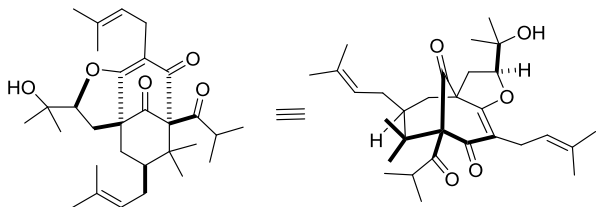


Total Synthesis of Garsubellin A

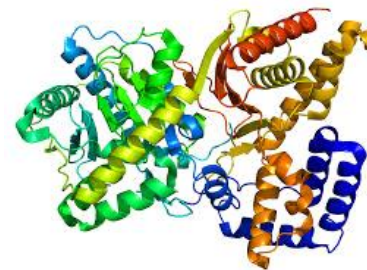
Kuramochi, A., et al. *JACS*, 2005, 14200-14201.

Siegel, D. R. and Danishefsky, S. J. *JACS*, 2006, 1048-1049.

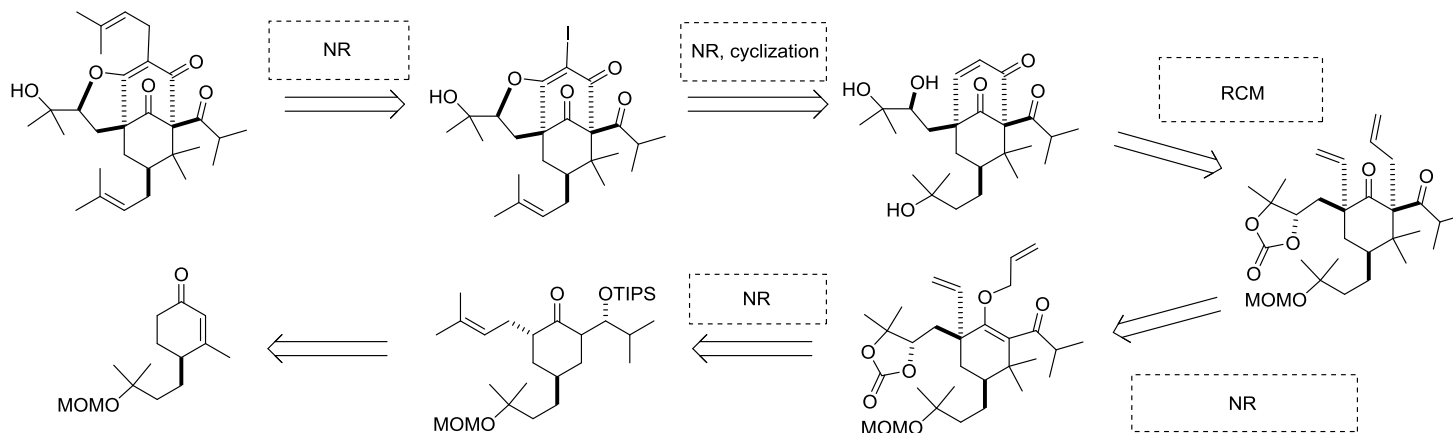
Uwamori, M. and Nakada, M. *J. Antibio.*, 2013, 141-145.



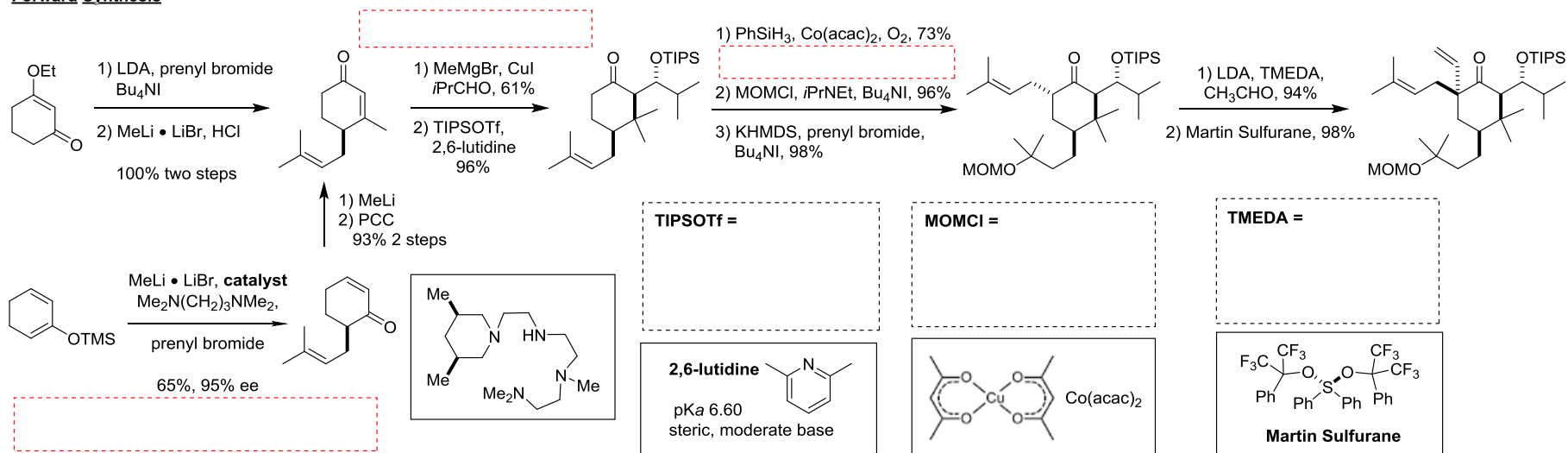
- Isolated in 1997 by Fukuyama from *Garcinia subelliptica*
- polyprenylated phloroglucin derivate, contain highly congested bicyclo[3.3.1]nonane-1,3,5-trione core
- Potent neurotrophic activity; induces choline acetyltransferase which is a key enzyme in acetylcholine synthesis

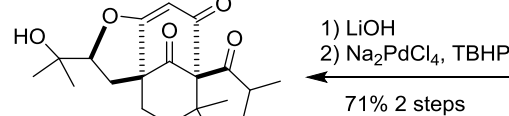
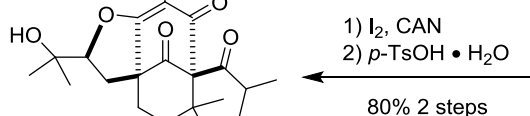
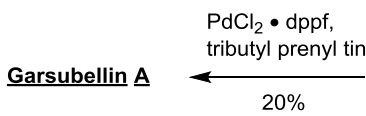
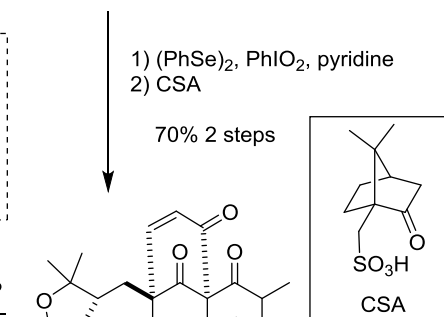
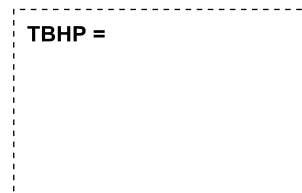
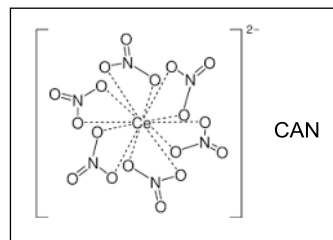
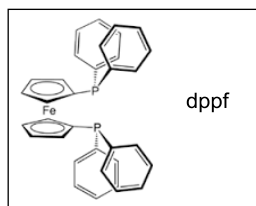
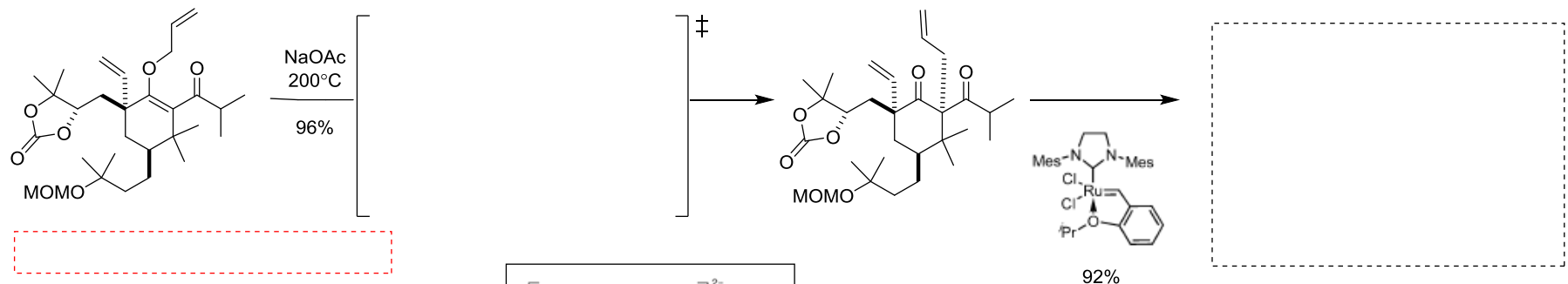
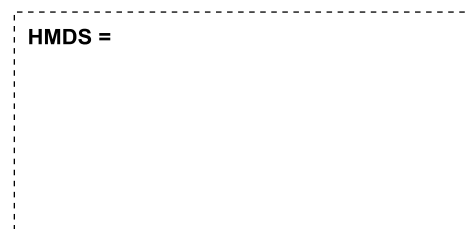
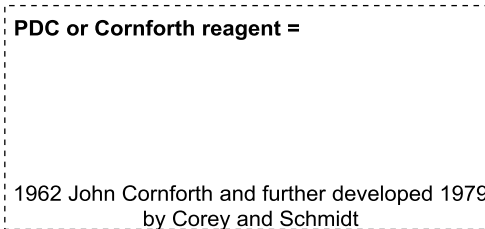
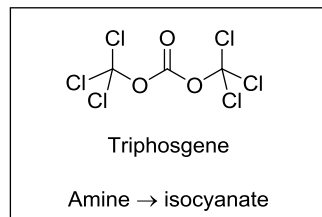
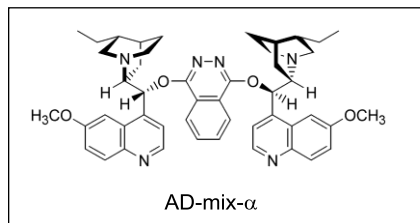
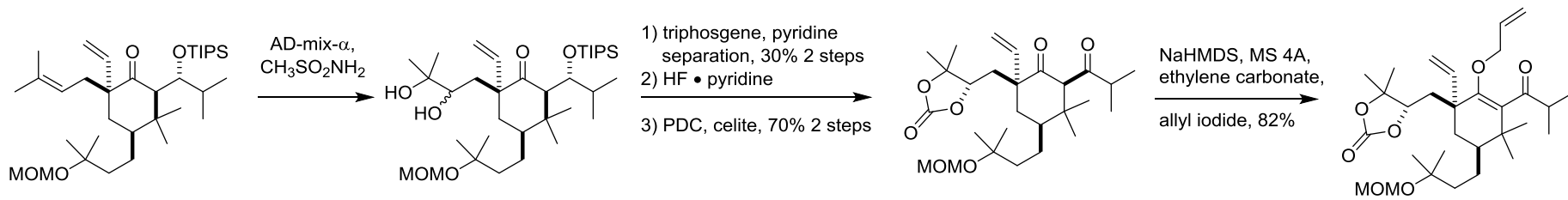


Retrosynthesis



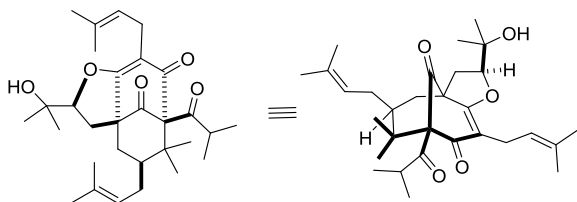
Forward Synthesis



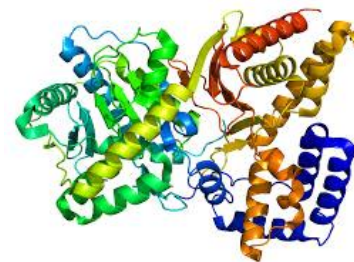


Total Synthesis of Garsubellin A

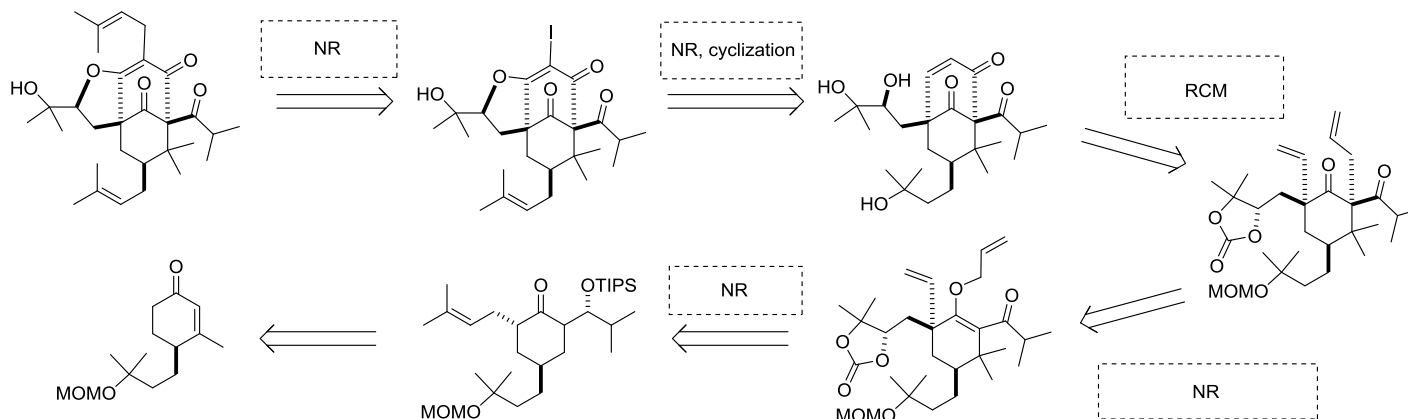
Kuramochi, A., et. al. *JACS*, 2005, 14200-14201.
Siegel, D. R. and Danishefsky, S. J. *JACS*, 2006, 1048-1049.
Uwamori, M. and Nakada, M. *J. Antibio.*, 2013, 141-145.



- Isolated in 1997 by Fukuyama from *Garcinia subelliptica*
- polyprenylated phloroglucin derivate, contain highly congested bicyclo[3.3.1]nonane-1,3,5-trione core
- Potent neurotrophic activity; induces choline acetyltransferase which is a key enzyme in acetylcholine synthesis



Retrosynthesis



Forward Synthesis

